



Infor WM – Turning Costs into Competitive Advantage

Brent Forden
Director – Alliances, Distribution SCM



Agenda

- Customer References
- Solution Overview
- Functionality Overview
 - ⇒ Inbound Processing
 - ⇒ Inventory Management
 - ⇒ Outbound Processing
 - ⇒ Work Order Processing
 - ⇒ Event Management
 - ⇒ Labor Productivity
- Questions & Answers

Infor WM Clients

MFG / CPG



Food & Beverage



High Tech



Wholesale/Industrial



3PL



Retail



Manufacturing Clients Profile



- Manufacturer of candles and aroma therapy
- CPG distributor – e.g. Wal-Mart
- DC in Leesburg, Ohio (North of Cincinnati)



- Abrasives division with industrial & home improvement retail distribution
- Similar customer grouping/zoning & distribution



- Manufacturer & distributor of pest management products
- Lot controlled environment tracking raw materials and finished goods
- Dallas, Texas

Honeywell

- Commercial & Residential Home Comfort Systems
- Inbound from Mfg Facilities
- Industrial Supplier & Home Improvement Retail Distribution
- Retail display kitting
- US site has 80 users; CN site has 15 users



- Specialty Products Division in Chicago (adhesives, coatings and sealants)
- 75 User site
- Lot controlled environment



- Building & Industrial Supplies
- Inbound from Mfg Facilities, outbound to diverse markets including retail
- 33 Global Sites & Growing
- Largest Newark 2MM sq ft w/ 190 users. Smallest 30K sq ft with 10 users

Efficiency Improvements



- Overall productivity improved 5 times with WMS
- Picking productivity improved 10 times
- Inventory write-off down to \$7K of \$30 million
- Shipping errors down from 2700 -> under 100



- Reduced inventory by 50%
- Reduced budgets by 20%
- Increased productivity by 33%
- Reduced forms expense by \$100,000



- Overall productivity improved 15-25%
- Space utilization increased 10%
- Inventory accuracy improved 33% to 99.9%



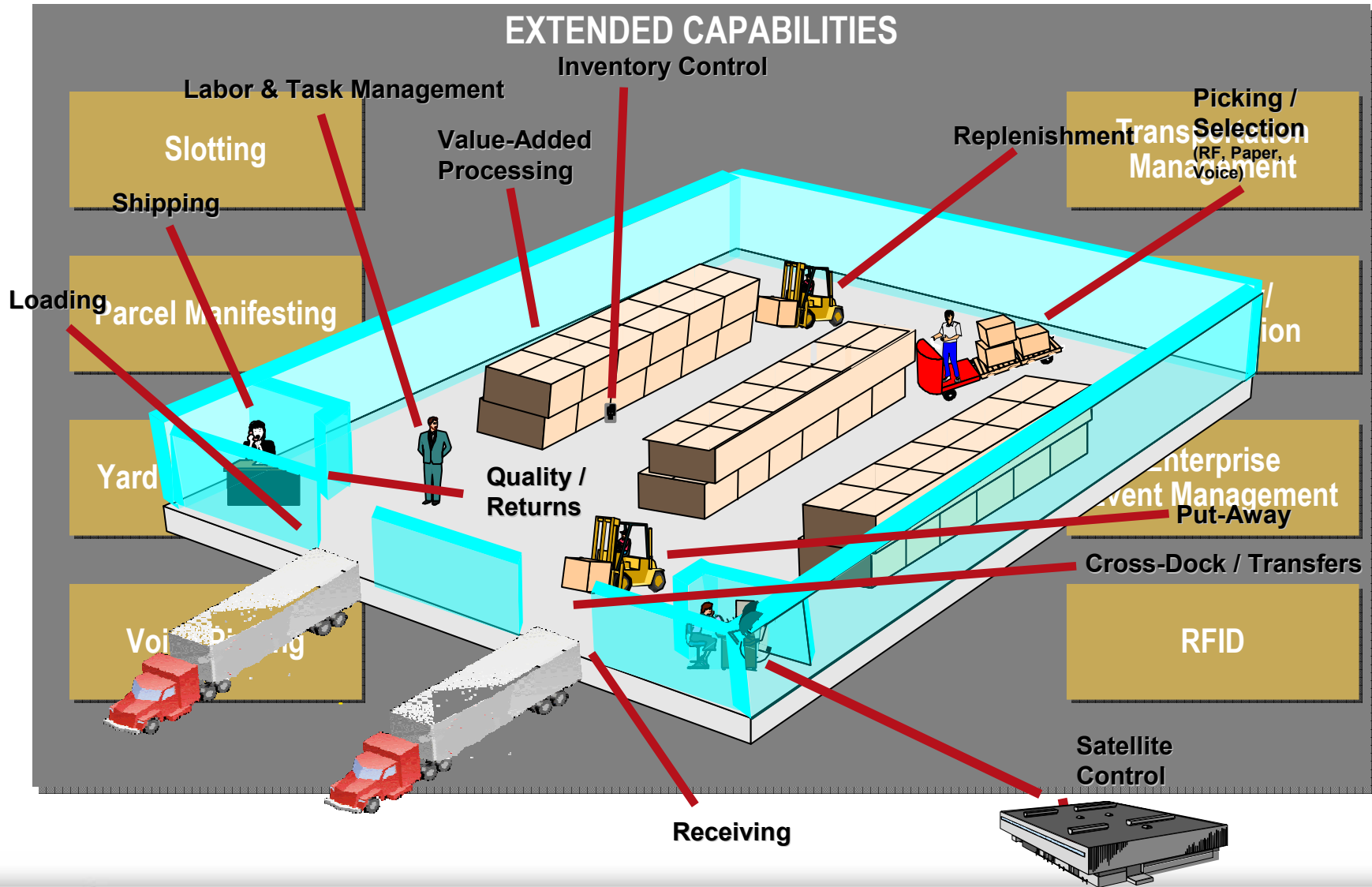
- Labor productivity
- Improved space utilization
- Increased inventory accuracy
- Increased shipment accuracy



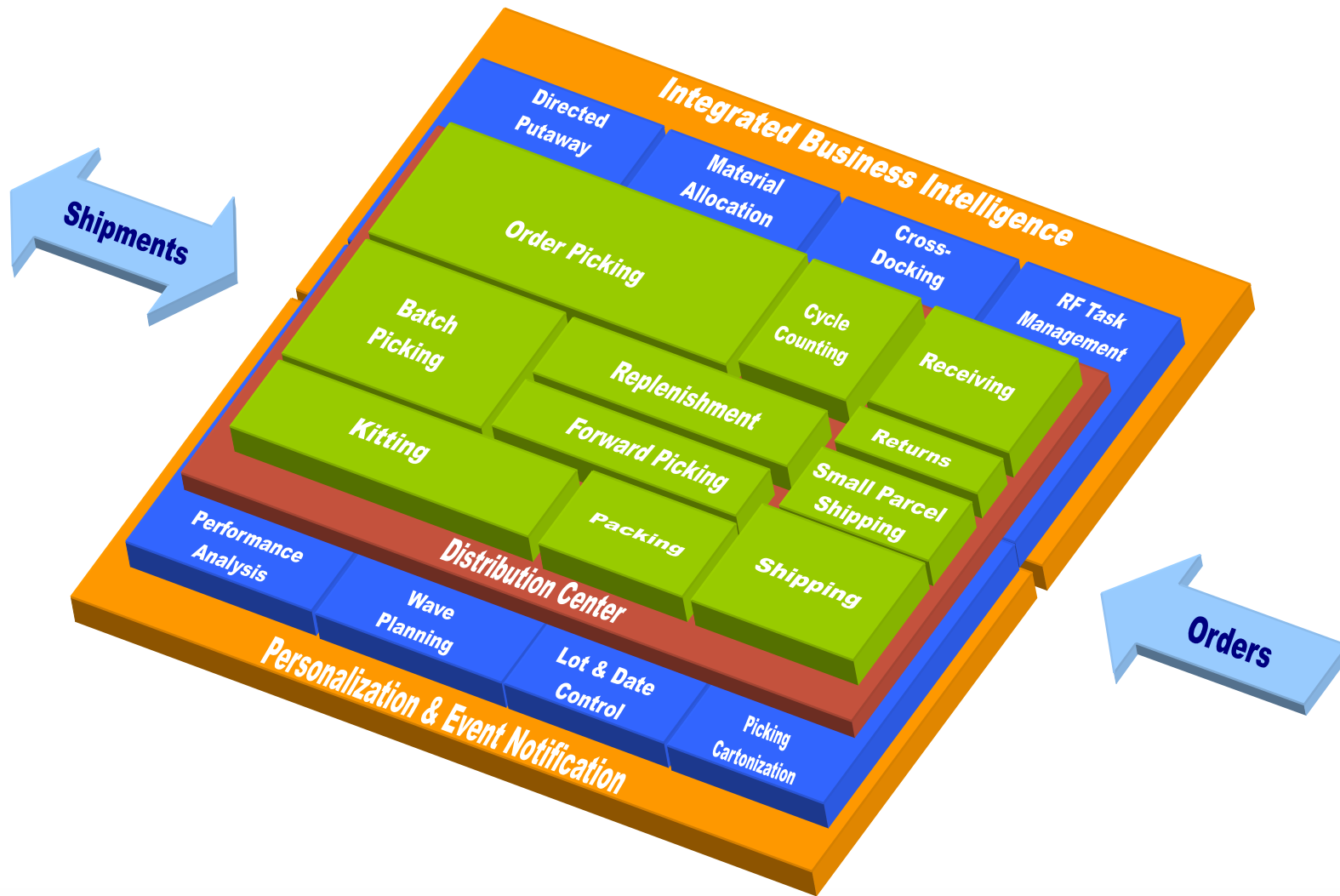
Agenda

- ⇒ Customer References
- ⇒ Solution Overview
- ⇒ Functionality Overview
 - ⇒ Inbound Processing
 - ⇒ Inventory Management
 - ⇒ Outbound Processing
 - ⇒ Work Order Processing
 - ⇒ Event Management
 - ⇒ Labor Productivity
- ⇒ Questions & Answers

Best-In-Class Features



Warehouse Management Functionality



WM Architecture

➤ Scalable architecture

- ⇒ Centralized or distributed support
- ⇒ Single architecture for browser, RF
- ⇒ Multiple warehouse support
- ⇒ Multiple language support

➤ Zero-footprint

- ⇒ Wan deployable
- ⇒ No client administration

➤ Database options

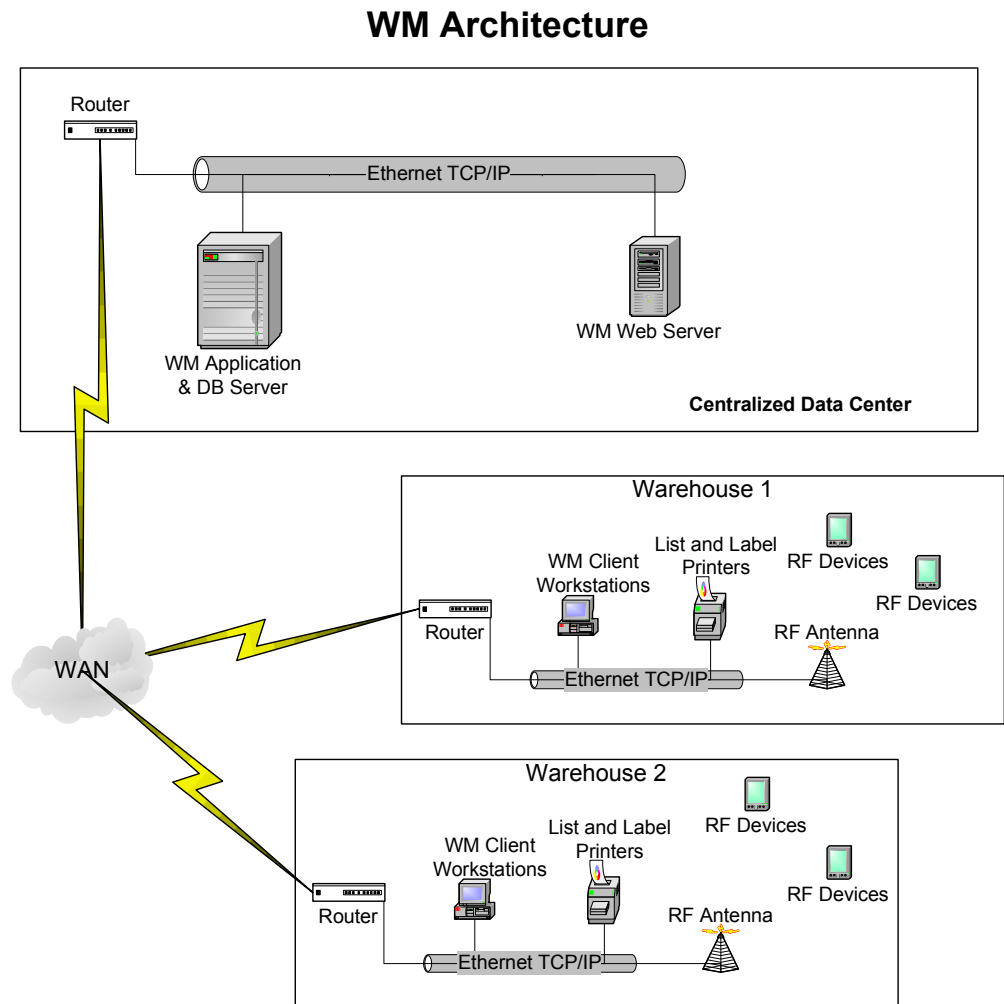
- ⇒ SQL server, Oracle, Informix

➤ Platform options

- ⇒ Windows, Unix

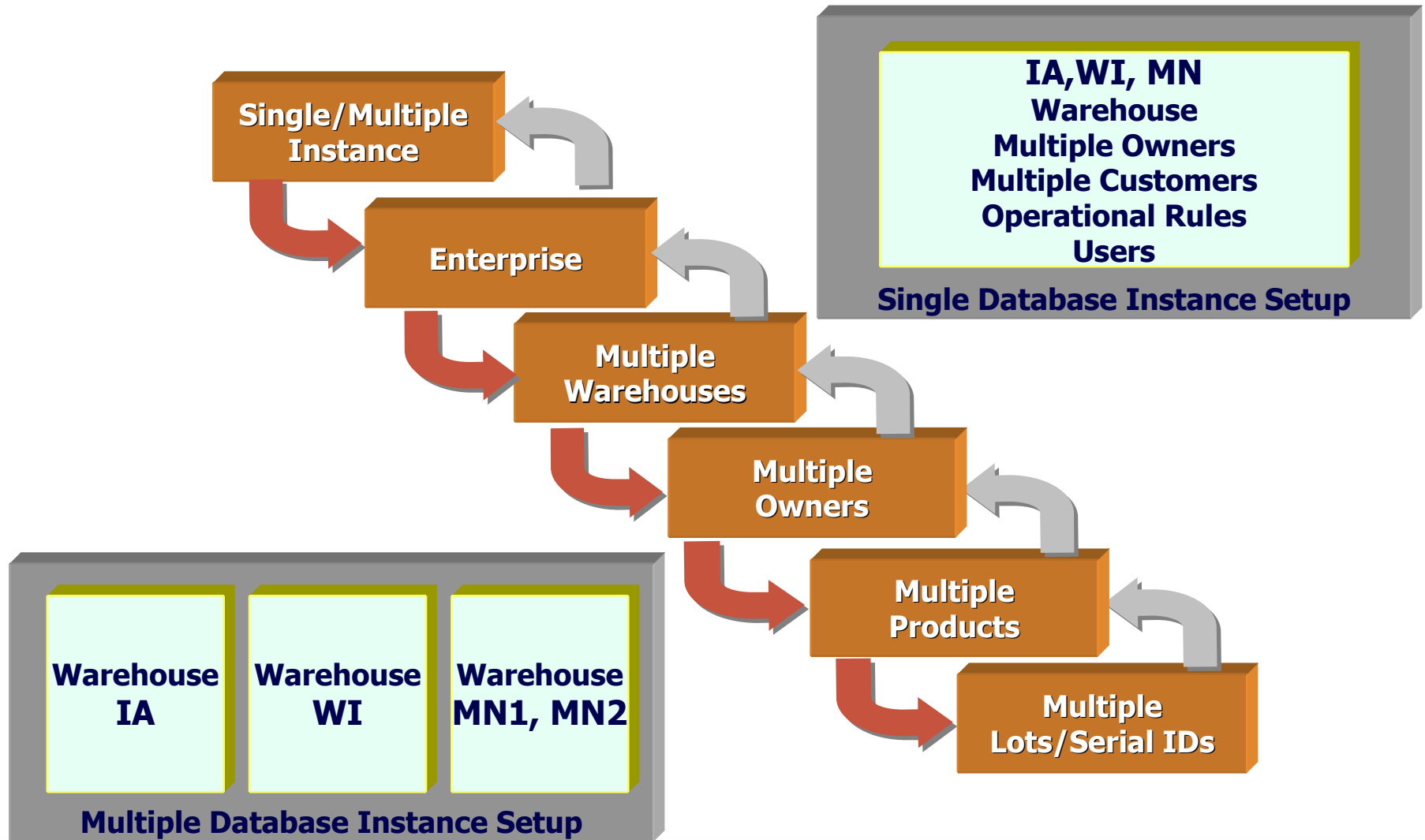
➤ Web services

- ⇒ Easy mass import and export
- ⇒ All transactions have associated web service

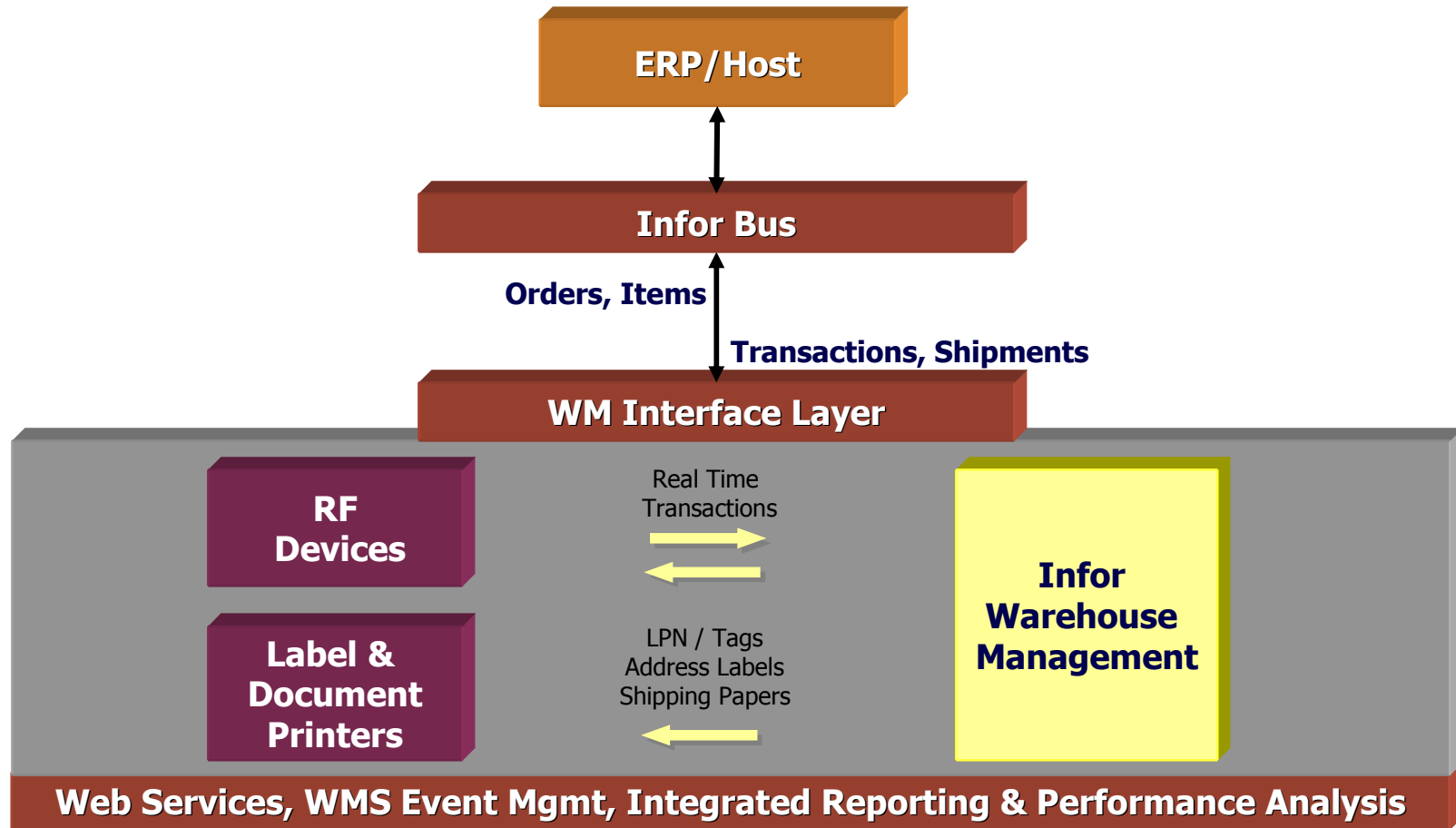


Infor WM Application Architecture

Database, Enterprise, Warehouse, Owner, Inventory



WM Integration



RF Transactions

- Receiving, Putaway
- Picking, Packing, Shipping
- Replenishment, Cycle count
- Real Time Validation

WMS

- Receiving & Putaway
- Pallet & Lot Tracking
- FIFO Movement
- Cycle Counting

- Task Management
- Picking, Loading, Shipping
- Value Added Services (VAS)
- Forward Pick Replenishment
- Picking Cartonization

User Access & Personalization

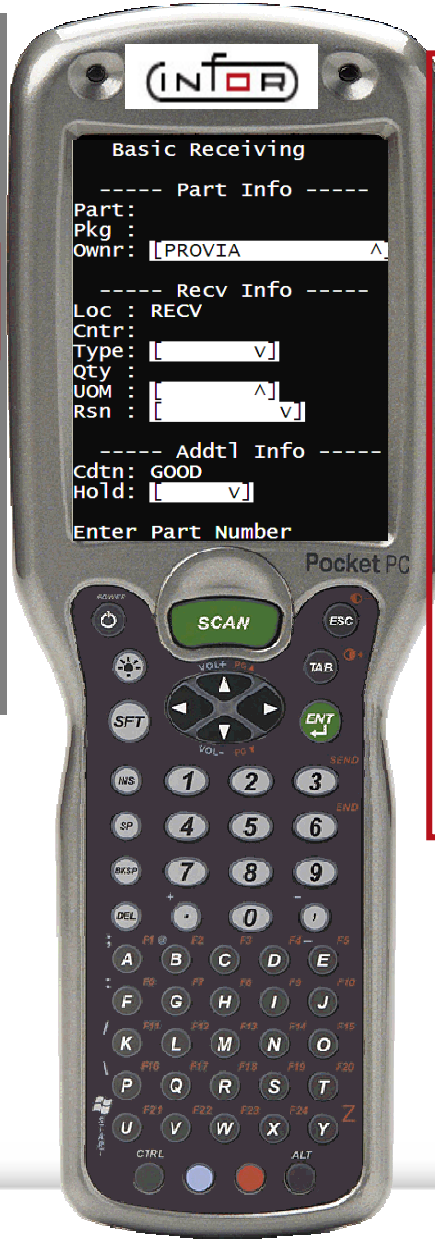
Flexibility to Meet Your Environment

Web Desktop

Warehouse	Location	Type	Work Zone	Equipment	Access Zone	Loc Status	Tag Tracking	Loc Sid Zone	Empty Cycle	Count Status	Last Cycle Count
GR	COMW01	LIFO	CM1	LOW	N	CM1	E		2003-01-22	12:57:29	
GR	COMW02	LIFO	CM1	LOW	N	CM1	E		2003-01-22	12:57:29	
GR	COMW03	LIFO	CM1	LOW	N	CM1	E		2003-01-22	12:57:29	
GR	COMW04	LIFO	CM1	LOW	N	CM1	E		2003-01-22	12:57:29	
GR	COMW05	LIFO	CM1	LOW	N	CM1	E		2003-01-22	12:57:29	
GR	COMW06	LIFO	CM1	LOW	N	CM1	E		2003-01-22	12:57:29	
GR	COMW07	LIFO	CM1	LOW	N	CM1	E		2003-01-22	12:57:29	
GR	COMW08	LIFO	CM1	LOW	N	CM1	E		2003-01-22	12:57:29	
GR	COMW09	LIFO	CM1	LOW	N	CM1	E		2003-01-22	12:57:29	
GR	COMW10	LIFO	CM1	LOW	N	CM1	E		2003-01-22	12:57:30	
GR	COMW11	LIFO	CM1	LOW	N	CM1	E		2003-01-22	12:57:18	
GR	COMW12	LIFO	CM1	LOW	N	CM1	E		2003-01-22	12:57:18	
GR	COMW13	LIFO	CM1	LOW	N	CM1	E		2003-01-22	12:57:18	
GR	COMW14	LIFO	CM1	LOW	N	CM1	E		2003-01-22	12:57:18	

Web Dashboard

Year	Product Line	Actual quantity	Expected volume
2005	Personal Accessories	86,322	86,882
2005	Camping Equipment	206,594	206,758
2005	Golf Equipment	38,718	37,991
2005	Mountaineering Equipment	139,582	139,228
2005	Outdoor Protection	171,182	171,794
2005	Personal Accessories	133,674	133,566
2006	Camping Equipment	377,818	338,996
2006	Golf Equipment	41,770	40,344
2006	Mountaineering Equipment	162,396	149,197
2006	Outdoor Protection	112,022	128,618
2006	Personal Accessories	169,912	170,568
Summary		2,215,354	2,166,005

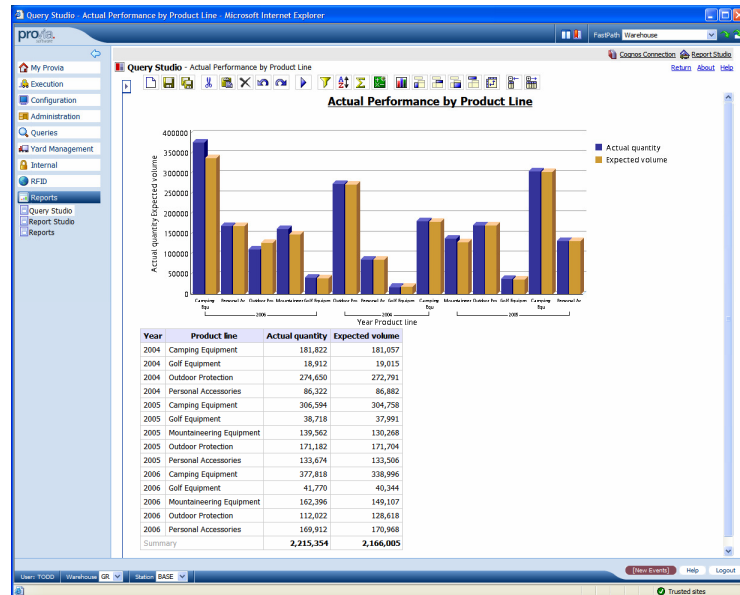


RF Transactions



Integrated Performance Analysis

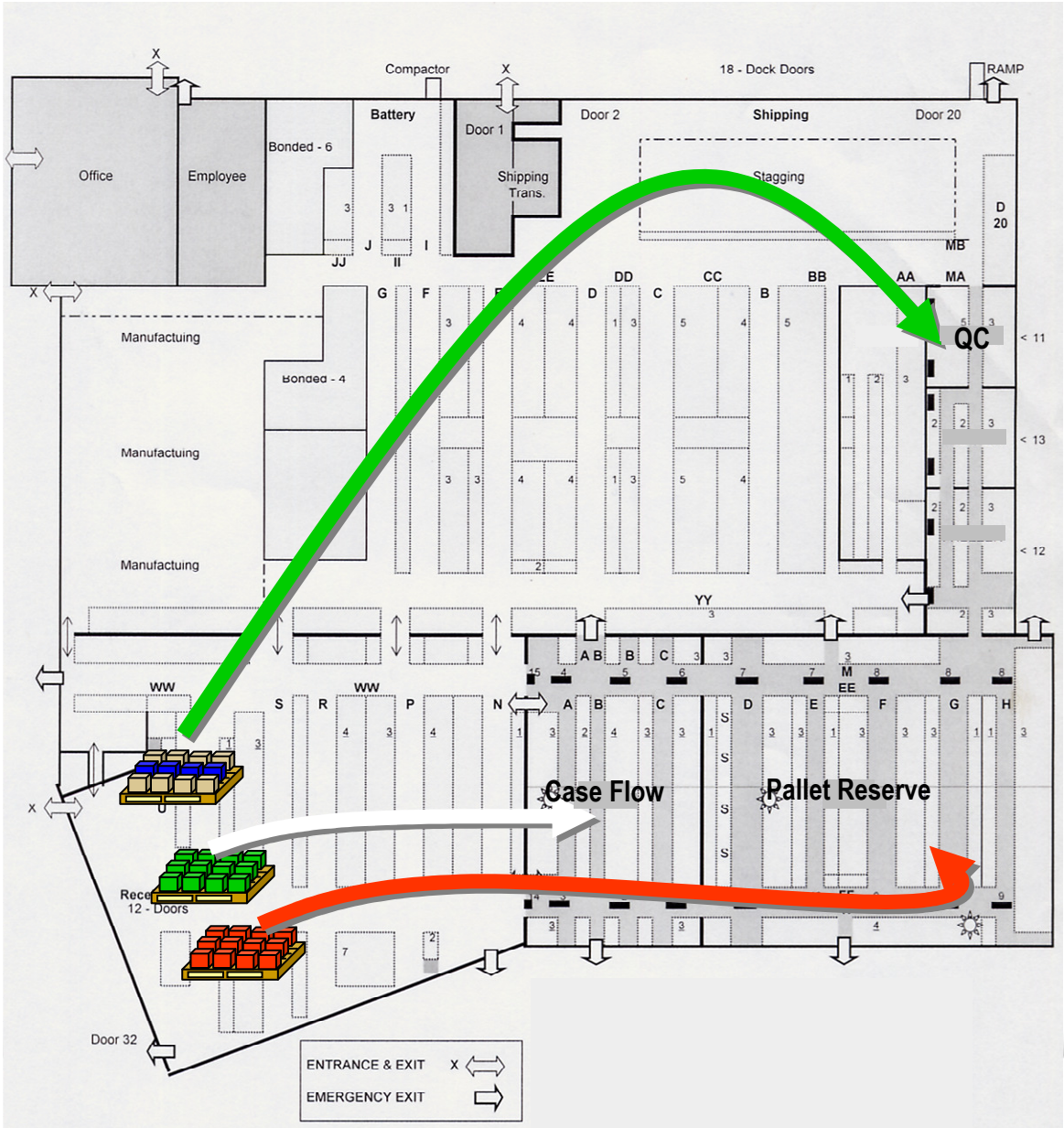
- ⇒ End user accessible
 - ⇒ Super User Manageable
- ⇒ Drag and drop reports
 - ⇒ Grouping, cross-tabs, pivots
 - ⇒ Charts
- ⇒ Output to
 - ⇒ Web page
 - ⇒ Printer
 - ⇒ PDF
 - ⇒ Microsoft Office
- ⇒ Embedded advanced report writer
- ⇒ User designed documents
 - ⇒ Packing list
 - ⇒ Bill of lading
 - ⇒ Manifest
- ⇒ Integrated meta-data layer
 - ⇒ Users do not need to know database layout
 - ⇒ Consistent data element names
 - ⇒ Reports easily survive upgrades
- ⇒ Report scheduling and routing



Agenda

- ⇒ Customer References
- ⇒ Solution Overview
- ⇒ Functionality Overview
 - ⇒ Inbound Processing
 - ⇒ Inventory Management
 - ⇒ Outbound Processing
 - ⇒ Work Order Processing
 - ⇒ Event Management
 - ⇒ Labor Productivity
- ⇒ Questions & Answers

Inbound Process



Inbound Order & ASN Creation

Visibility
Workload Planning

Receive Product
RF and/or Desktop
Lot & Disposition Capture
(Mfg, ASN, PO, RMA, Blind)

Labels

Release & Putaway Work Flow
Status Driven (Damaged, Rework)
Cross Dock (Outbound or Kit Order)
Potential Cross Dock (Hot Pick)
Forward Pick Location
Dedicated Location (Fixed)
Storage Rules (Slotting/Zoning)

Agenda

- ⇒ Customer References
- ⇒ Solution Overview
- ⇒ Functionality Overview
 - ⇒ Inbound Processing
 - ⇒ Inventory Management
 - ⇒ Outbound Processing
 - ⇒ Work Order Processing
 - ⇒ Event Management
 - ⇒ Productivity Reporting
- ⇒ Questions & Answers

Inventory Management

➔ Inventory Attribute Tracking

- ➔ License Plate/Tag Tracking
- ➔ Lot & Date Control
- ➔ Ownership Tracking
- ➔ Hold Status Tracking
- ➔ User Defined Attributes

➔ Full Traceability in History

- ➔ Detail of all movement by item, LPN, location, lot, serial number
- ➔ Tracking of user, date, time stamps

➔ Cycle Counting

- ➔ Real Time Updates
- ➔ Automation Options
- ➔ Discrepancy Triggers
- ➔ Escalation

➔ Forward Picking & Replenishment Handling



Agenda

- ⇒ Customer References
- ⇒ Solution Overview
- ⇒ Functionality Overview
 - ⇒ Inbound Processing
 - ⇒ Inventory Management
 - ⇒ Outbound Processing
 - ⇒ Work Order Processing
 - ⇒ Event Management
 - ⇒ Labor Productivity
- ⇒ Questions & Answers

Dynamic Work Management

Maximizing Labor Productivity



Tasks



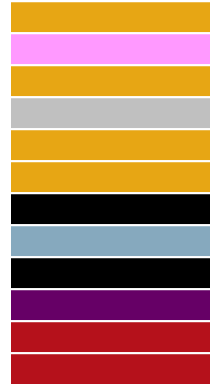
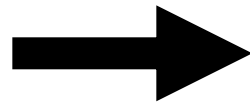
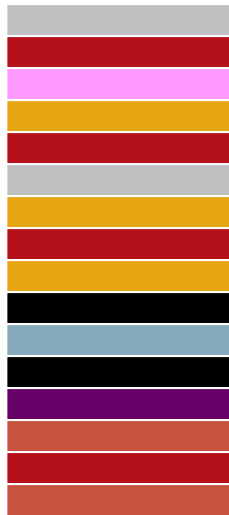
Permissions



Priority



Proximity



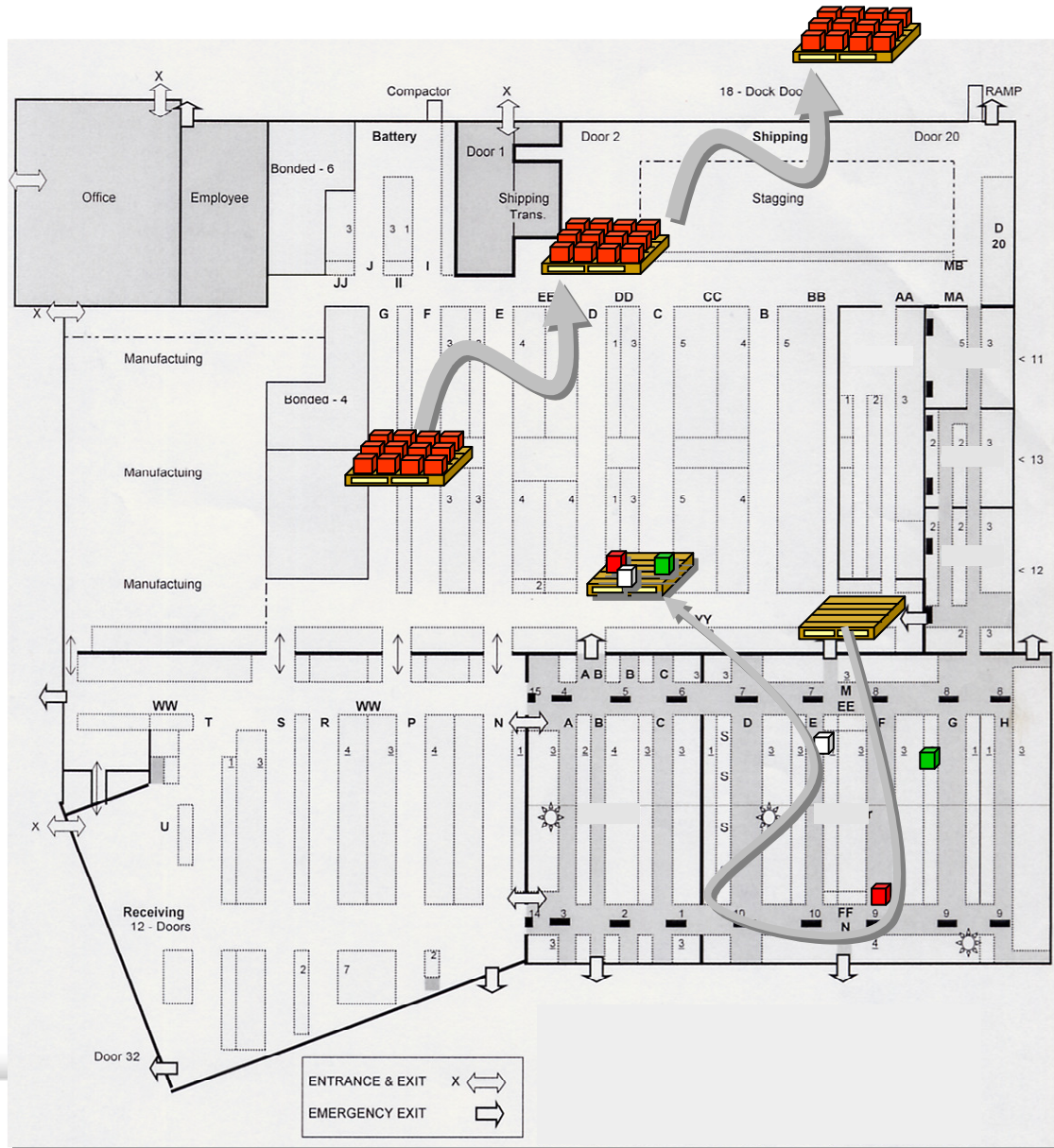
Travel path organized

Putaway
Picks
Loading
Cycle counts
Replenishment

Users' role
Equipment

Users' priorities
Tasks' priorities
Orders' priorities
Interleaving

Outbound Process



Customer Order Creation

Release, Allocate & Pre-Cartonize Orders

Pick List
Pick Labels
Pre-Manifested Labels

Picking Options

(RF, Paper, Mechanical, Label)
(by Order, Carrier, Zone, Pick & Pack)

Triggered Cycle Count Replenishment

Check Pack, Trailer Load, Paperwork & Ship Order

Address Label
BOL
Packing List
Manifest

Picking Methodologies

➔ Execution Considerations

- ⇒ RF System Directed
- ⇒ Paper
- ⇒ Label Directed

➔ Pick to Pack

- ⇒ Cartonization Rules
- ⇒ Label Directed Picking

➔ Streamline Options

- ⇒ Cluster picking
- ⇒ Palletized Picking
- ⇒ Batch picking
- ⇒ Zone picking
- ⇒ Pick by ...
 - ➔ Order, shipment, carrier



PICK LIST: PC20				
PRINT DATE: Thurs, Sept 29, 2001				
PRINT TIME: 11:10:09				
FROM LOC	PART	QTY/UOM	TO LOC	CONFM
02-04-02	MM56	1 PIECE	SHIP101	_____
04-03-04	J300	2 EACH	SHIP103	_____
03-04-06	KP32	2 PIECE	SHIP101	_____
Picked By: _____		Date: _____		



Cartonization

- Pick multiple orders in a single pass
- WMS optimizes travel path
- Configurable container selection logic
- Optional Pre-rate containers
- Pre-print shipping labels
- System or operator directed

Ship To:
Nelson Electric Supply
821 South Airline Road
Racine WI 53406

COMMENTS
Check for correct packaging
Expedite receipt

Ship From:
Provia Software, Inc.
6460 Corporate Grove Boulevard, SE
Grand Rapids MI 49506-3311

Ship Date: 2001-03-25 17:00:00 Operator: CLS
Shipment: SHP1764 Destination Loc:
Carrier: UPS

PRO Bill: 1Z4207440300002722
Carton Size: CTSM First Area:
Additional Areas:

Container: 3063

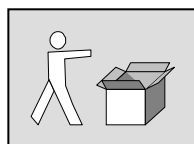
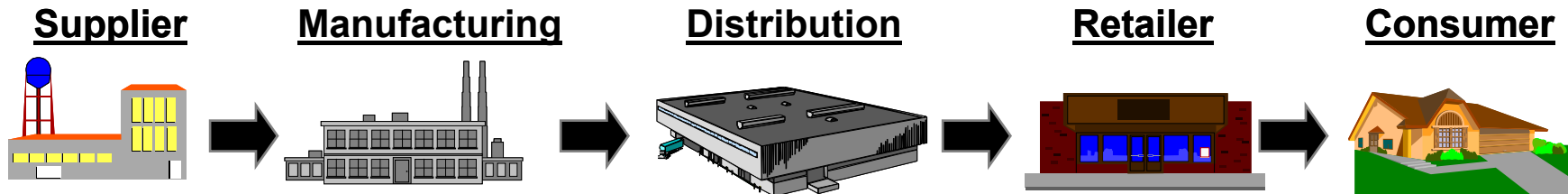


Agenda

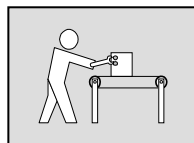
- ⇒ Customer References
- ⇒ Solution Overview
- ⇒ Functionality Overview
 - ⇒ Inbound Processing
 - ⇒ Inventory Management
 - ⇒ Outbound Processing
 - ⇒ Work Order Processing
 - ⇒ Event Management
 - ⇒ Productivity Reporting
- ⇒ Questions & Answers

Work Order Processing

Operations performed in a warehouse that add value to existing commodities or combine component commodities into finished good commodities or sub-assemblies.



Kitting



Assembly



Value Added Services

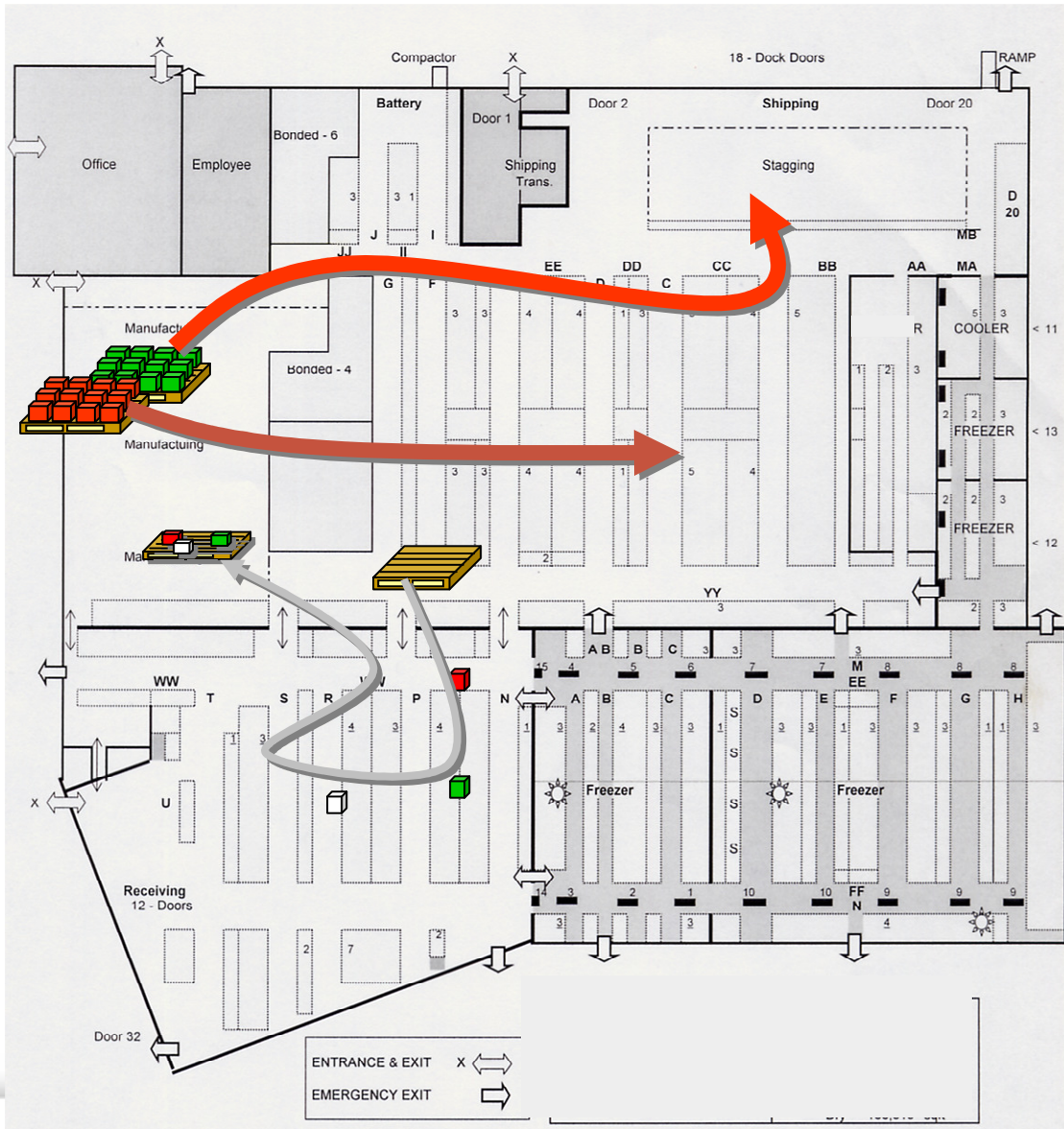
Labeling

Refurbishing

Functionality Highlights

- *Bill of Material*
- *Work Center Definition*
- *Kit to Stock*
- *Kit to Order*
- *Automatic Component Consumption*

Work Order Process



Work Order Creation

Work Order Packet

Pick Component Items

Materials Consumption (Components)

Receive Work Order (Finished Product)

Putaway or Pick for Order

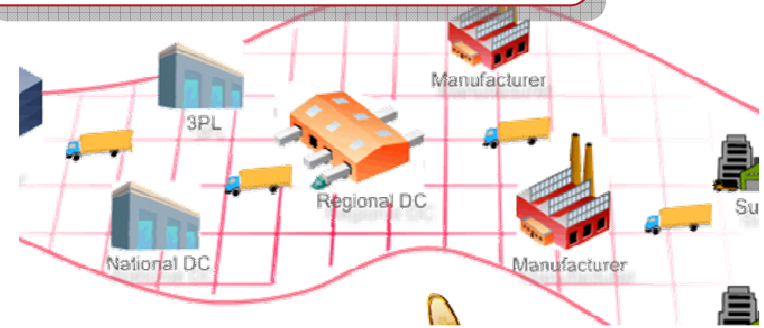
Agenda

- ⇒ Customer References
- ⇒ Solution Overview
- ⇒ Functionality Overview
 - ⇒ Inbound Processing
 - ⇒ Inventory Management
 - ⇒ Outbound Processing
 - ⇒ Work Order Processing
 - ⇒ Event Management
 - ⇒ Labor Productivity
- ⇒ Questions & Answers

WM Event Management

- ➔ Monitors the execution of all applications and processes
- ➔ Pre-defined, real-time “monitors”
- ➔ Intelligent alerts and messages across the community
- ➔ “Closes the loop with reporting and dashboards”

Event Management



Examples

Supply Chain

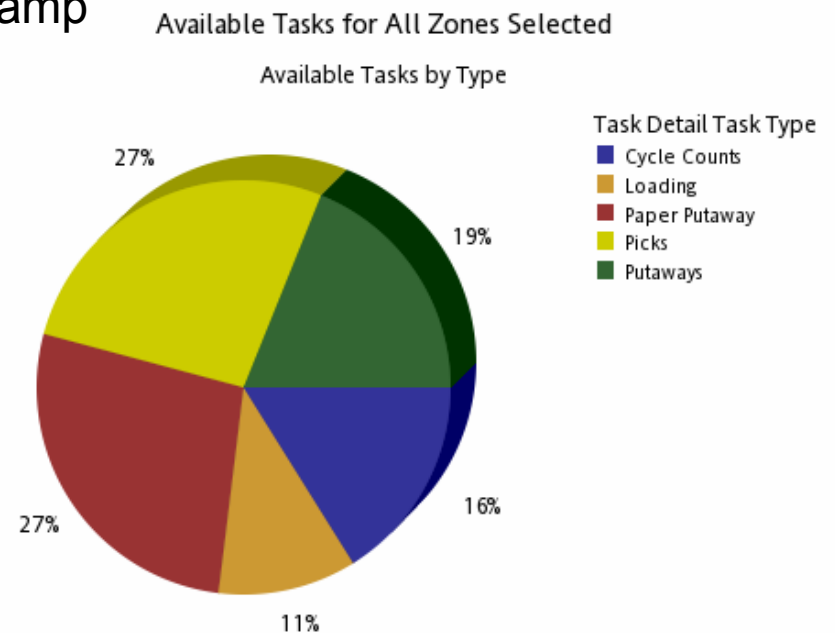
- ASN – approaching or past
- Appointments – carrier late
- Receiving – hot item received
- Receiving – damage tracking
- Picking – pick variance
- Shipping – not shipped, late
- Inventory – reorder alert
- Inventory – large adjustment
- Inventory – product on hold

Agenda

- ⇒ Customer References
- ⇒ Solution Overview
- ⇒ Functionality Overview
 - ⇒ Inbound Processing
 - ⇒ Inventory Management
 - ⇒ Outbound Processing
 - ⇒ Work Order Processing
 - ⇒ Event Management
 - ⇒ Labor Productivity
- ⇒ Questions & Answers

Labor Productivity

- ⇒ Use historical information
 - ⇒ All transactions & movement recorded
 - ⇒ Includes users, task type, and time stamp
- ⇒ Reporting
 - ⇒ Who is working?
 - ⇒ What are they doing?
 - ⇒ Where are they working?
 - ⇒ How much are they doing?
- ⇒ Overall operation
 - ⇒ How much by task type?
 - ⇒ How many orders, lines, cases, etc.?
- ⇒ Workforce monitoring
 - ⇒ Outstanding work assignments
 - ⇒ Real-time view of completed, active, unassigned



Agenda

- ⇒ Customer References
- ⇒ Solution Overview
- ⇒ Functionality Overview
 - ⇒ Inbound Processing
 - ⇒ Inventory Management
 - ⇒ Outbound Processing
 - ⇒ Work Order Processing
 - ⇒ Event Management
 - ⇒ Labor Productivity
- ⇒ Questions & Answers

Questions & Answers

➔ If you need more information on Infor supply chain management solutions:

- ➔ Ben McCormick, Cistech
- ➔ 704.814.0016
- ➔ ben.mccormick@cistech.net

