

Paperless Pick-Pack-Ship For MAPICS COM



Developed by:



Overview

Paperless Pick-Pack-Ship (PPPS) for MAPICS XA significantly improves on the standard capabilities of COM to improve the speed, efficiency, and accuracy of the customer order delivery process. PPPS utilizes radio frequency (RF) handheld terminals to expedite order picking and packing and simplifies warehouse operations by automating COM shipping functions.

PPPS users have achieved significant improvements immediately, including:

- **Reduction in operating costs** enabled by a significant increase in efficiency of everyone involved in the warehouse, including pickers, shipping managers, and back office personnel.
- **Increase in customer satisfaction** level from more timely and accurate shipments, while real time data enhances customer communications. With integration to parcel shipping systems, all shipment status information is readily accessible from MAPICS. With the Customer Portal, your customers have 24 x 7 access to their shipment information.
- **Increased in inventory accuracy helps reduce inventory levels.** As inventory accuracy increases because of real time, interactive transactions, your inventory planners have confidence to reduce 'just in case' buffers they use to ensure customer service levels.

Because PPPS was designed specifically for COM and complements the COM processes you use today, installation and implementation can be accomplished in less than a week! You will achieve benefits immediately!



"Engineered Controls used the real time transaction capabilities of PPS to improve inventory accuracy by 30%. In addition, the improved picking process has improved warehouse efficiency and increased customer service levels by reducing shipping errors by 99%.

Engineered Controls, Elon, NC



"With PPS we realized a 30% reduction in order processing time almost immediately. That increase in efficiency eliminated the need to add additional pickers, saving us the cost of that position. In addition, the real time material transactions we get with PPS have helped us improve our inventory accuracy."

Tuff Torq, Morristown, TN



"The solution instantly improved our shipping warehouse efficiency – we were able to ship more with less effort. With CISTECH's PPS product, we avoided hiring additional warehouse personnel to meet record shipping demands"

Meco, Greeneville, TN

Paperless PPS not only streamlines the MAPICS COM processing flow, it provides significant functional improvements with many features that are not available in MAPICS. Following are some key capabilities:

Improve the speed, efficiency, and accuracy of order picking utilizing RF Handheld Devices

- Allows either guided or unguided picking of Pick list items. In guided picking mode, the operator is directed to the next line on the pick list, they confirm the quantity, and are presented with the next item. In unguided mode, operators can use a pick list to direct their activities.
- A Pick List item can be processed in as few as 2 RF screens if Guided Picking is activated, or as few as 3 RF screens if Guided Picking is not activated
- Allows entry of item, turnaround, or UPC number from RF handheld (un-guided picking only)
- Scan to verify (tailorable) feature ensures correct item is picked from the correct location
- Includes support for batch/lot control, serialized end items and kit items
- User exit allows printing of item label at pick time
- Allows picking of either Stock Pick List or regular MAPICS Pick list items.
 - Provides full handling of discretely allocated items.
- Supports “Consolidated Picking” – ability to combine multiple customer pick lists into a single picking run
- Provides full pick quantity adjustment capabilities by item and during the Pick List Verification process.
- Items can be substituted during picking

Improves timeliness and accuracy of inventory data

- Allows verification of all Pick List items from the RF device.
- Ability to inquire for current item location quantities from the RF handheld device.
- Automatically reduces inventory in the stocking location as items are picked, creating TW to staging location.
- Automatic backorder creation of unshipped items

```

Pick List      646
1000
PC, 166 MHZ, D
Staging Loc

Reqd:         5.000
Picked:       .000
Remain:       5.000

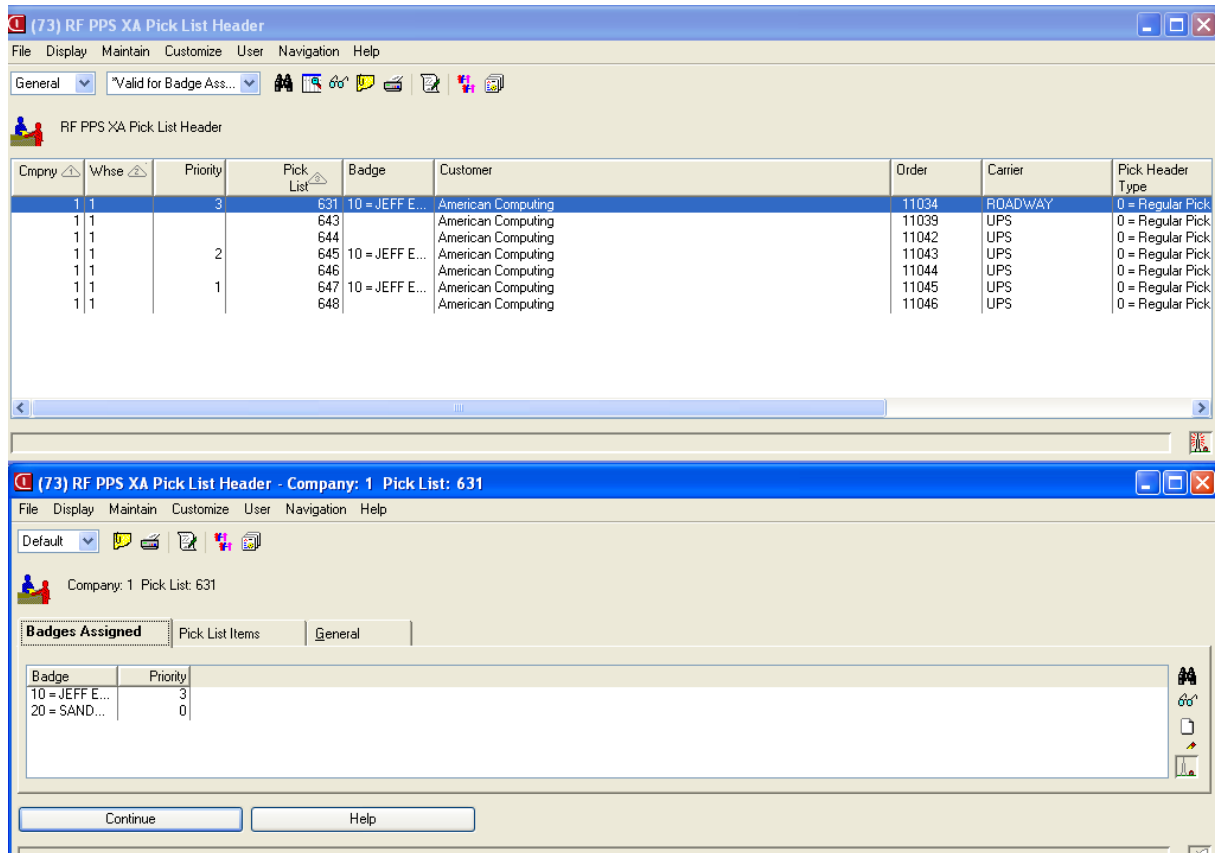
Location FG01
Qty           .000

F2=Rtn F3=Ext F4=Adj
F5=Avl F6=Ver F7=Sub
  
```

Improves management control of the picking process

- Pick lists can be assigned electronically to a specific employee
- Multiple pickers can pick the same Pick List at the same time (different items).
- Provides flexible Manager Approval of over/under picked items (by item, by Pick List or no approval).
- Provides flexible handling of insufficient inventory issues (hard halt, warning only, default to MAPICS settings)
- Provides visibility of current Pick Status for each Pick List, including Items, quantities picked, and Locations picked from
- Identifies the user that verified a Pick List

Assign pick lists electronically



The screenshot displays two windows from the CISTECH software. The top window, titled '(73) RF PPS XA Pick List Header', shows a table with the following data:

Empny	Whse	Priority	Pick List	Badge	Customer	Order	Carrier	Pick Header Type
1	1	3	631	10 = JEFF E...	American Computing	11034	ROADWAY	0 = Regular Pick
1	1			643	American Computing	11039	UPS	0 = Regular Pick
1	1			644	American Computing	11042	UPS	0 = Regular Pick
1	1	2		645	American Computing	11043	UPS	0 = Regular Pick
1	1			646	American Computing	11044	UPS	0 = Regular Pick
1	1	1		647	American Computing	11045	UPS	0 = Regular Pick
1	1			648	American Computing	11046	UPS	0 = Regular Pick

The bottom window, titled '(73) RF PPS XA Pick List Header - Company: 1 Pick List: 631', shows the 'Badges Assigned' sub-window with the following data:

Badge	Priority
10 = JEFF E...	3
20 = SAND...	0

Enhanced packing capabilities support multiple containers, license plates, and ASN database.

- Provides flexibility to pack boxes, into containers, into shipping containers.
- License Plate labels for each container enable Inventory moves and shipments with a single scan.
- Allows you to pick and pack at the same time, or stage picks for later packing
- Builds database required to enable ASN's as well as to create shipping and export documentation.



Interfaces to UPS, FedEx and DHL to reduce duplicate effort and increase data accuracy

- Carrier information can be entered from the RF device
- Automatically retrieve shipping charges and apply to customer shipments on a nightly basis.
- Updates COM with shipment date, charges, and tracking information

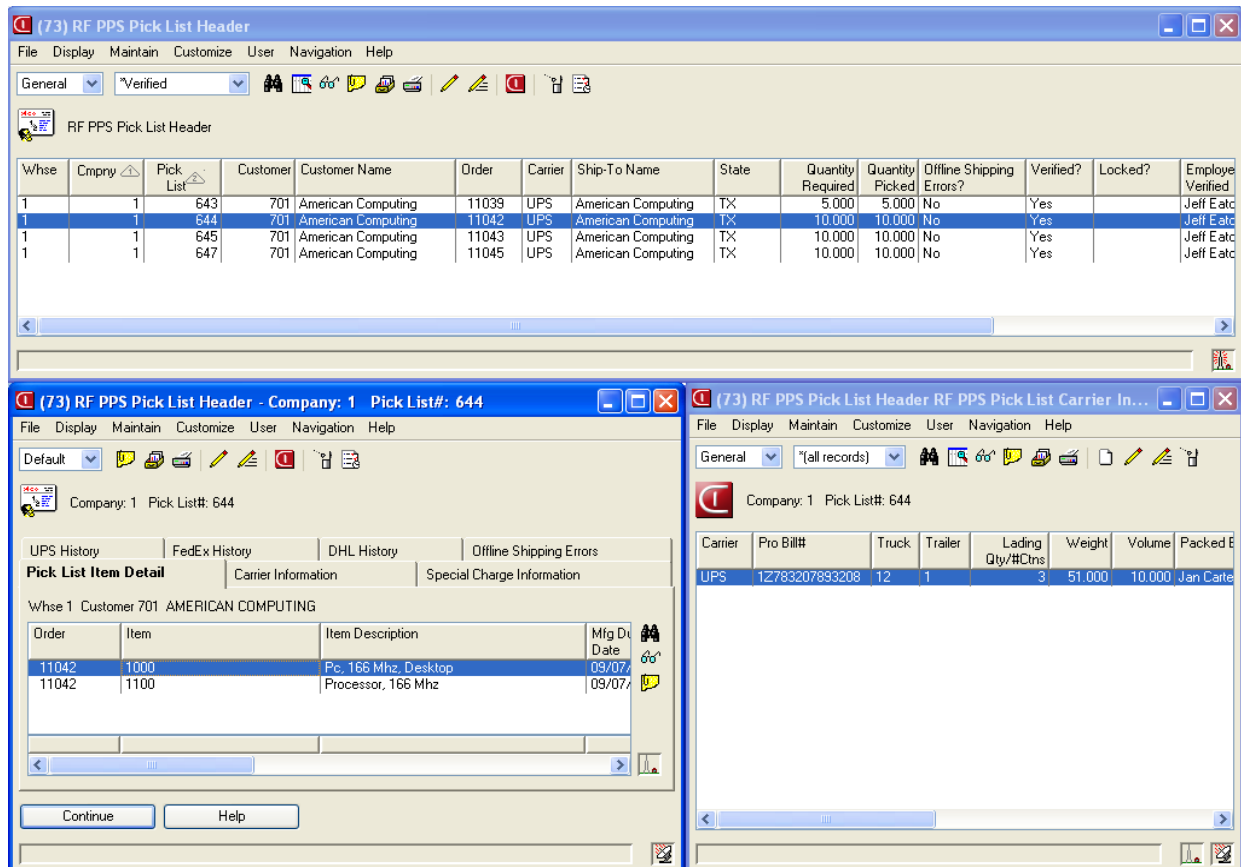
Provides enhanced printing capabilities

- Prints a standard customer name and address label (4 x 6) if desired
- User exits allow for easy integration to existing label programs
- Packing slip with actual pick quantities can be printed before creation of shipment

Significantly reduces the time and effort required to create MAPICS shipments via a special 'Create Shipments' back office function.

- No keying of COM shipment data required
- Allows entry of Carrier and Special Charge information.
- Allows flexibility for requesting MAPICS document printing (Packing List, Bill of Lading).
- Allows automatic invoice creation upon shipment creation.

Real time status of pick lists, create shipments



Extensive control file settings allow you to tailor the solution to meet your specific operating requirements

- Utilizes RF environment, warehouse, and employee badge controls to provide default settings for data requirements where possible.

Improve customer service and satisfaction with real time Customer Portal

Reach out to your customers with 24 x 7 information on orders and shipments. Your customers can see the status of their orders and shipments, and access the tracking number all in real time!

Customer Portal Orders										
Order#	Order date	PO number	Order amount	Request date	Shipment date	# of shipments	Pro bill number	Carrier	Invoice#	Backordered it
11065	10/28/2010		250	10/28/2010		0		UPS	0	No
11064	10/27/2010		250	10/27/2010	10/27/2010	1		UPS	0	No
11061	10/20/2010		250	10/20/2010	10/29/2010	1		UPS	0	No
11060	09/28/2010		252	09/28/2010	09/29/2010	1		ROADWAY	0	No
11056	09/22/2010		400	09/22/2010	09/22/2010	2	12011045001	UPS	534	No
11055	09/22/2010		24,549.6	09/22/2010	09/22/2010	3		UPS	532	Yes
11054	09/22/2010		150	09/22/2010	09/22/2010	2		UPS	530	No
11053	09/21/2010		150	09/21/2010	09/21/2010	2		UPS	528	No
11052	09/21/2010		150	09/21/2010	09/21/2010	1		UPS	527	Yes
11051	09/21/2010		150	09/21/2010	09/21/2010	1		UPS	0	No
11050	09/21/2010		250	09/21/2010		0		UPS	0	No
11049	09/21/2010		250	09/21/2010		0		UPS	0	No
11048	09/20/2010		150	09/20/2010	09/20/2010	1		UPS	0	No
11047	09/20/2010		100	09/20/2010	09/20/2010	2		UPS	524	No
11046	09/07/2010	KIT	250	09/07/2010		0		UPS	0	No

Customer Order Items							
Item / Description	Customer item/description	Quantity ordered	Quantity shipped	Quantity backordered	U/M	Item price	Extended item price
1000 PC, 166 MHZ, DESKTOP		5	5	0	EA	50	250
1001 PC, 200 MHZ, DESKTOP		5	5	0	EA	50	250

Paperless Pick Pack Ship streamlines warehouse operations and increases employee productivity by significantly reducing the effort required to pick and ship COM orders. And inventory is updated at the time the item is picked!

<i>XA Steps</i>	<i>PPPS Steps</i>
Create Pick Lists	
1. Release Pick Lists	1. Release Pick Lists
2. Print Pick Lists	
3. Sort Paper Pick Lists by priority and picker	
4. Distribute Paper Pick Lists	2. Electronically assign pick list to picker(s)
Pick Material	
5. Retrieve Paper Pick List	
6. Go to location specified by pick list	3. Go to location directed by PPS, Scan location
7. Write Qty on Pick List	4. Key Qty, includes batch/lot from location
8. Walk to terminal, inquire for other locations for material	
9. Retrieve additional Paper Pick List	<i>“XA is updated with adjusted inventory quantity in stocking location”</i>
Prepare for Parcel Shipping	
10. Weigh parcel at shipping station, apply label	5. Weigh parcel at shipping station, apply label
11. Write/attach freight charge to pick list	
12. Write/attach tracking number to pick list	<i>“XA process is finished for parcel shipping”</i>
Office Administration	
13. Select pick list for shipping (all shipments)	6. Select order for shipping (non-ground only)
14. Select items to be shipped	
15. Key Shipment Quantities from appropriate location	
16. Key Serial Number if Required	
17. Key freight charges to shipment	
18. Key carrier information/tracking number to shipment	7. Key carrier information for non-parcel shipments
19. Confirm Shipment	8. Confirm Shipment
Warehouse Mgmt	
20. Walk floor to determine order status to answer customer service request	9. Electronically monitor pick list status and electronically reassign picking responsibilities if required
21. Walk floor to determine pick list status	
22. Collect and redistribute pick lists to balance workload	
23. Print 'hot order' pick list and distribute on floor	

***Reduce the number of steps required to pick and ship
from 23 to 9 with Paperless PPS!***

General Information

- Supported for MAPICS Release 6, 7, 9
 - COM Shipping Workbench required at R7, R9
 - R6 back office functions in Browser require Integrator
 - R7 back office functions in Power Link require Enterprise Integrator
 - Customer Portal Requires Enterprise Integrator, System Link, and Catavolt XA Extender (R7/9)
- RF screens must be at least 20 characters wide and 16 lines long. They must support 5250 emulation. They can roll right/left and up/down. There are 24 CF keys available.
- A MAPICS user license is not required except for RF user packing into containers, utilizing items substitutions, or performing back office functions
- Complete “Turnkey” implementation available for as little as 1 user including:
 - RF Site Survey
 - RF Infrastructure / Handheld consulting and sales
 - Software RF infrastructure and handheld implementation
 - Training and “go live” support
- Other solutions available in Inventory Management suite include Physical Inventory for RF and IM Transactions and Inquiries for RF.

For more information contact:

Ben McCormick
General Manager MAPICS Solutions
704-814-0016
ben.mccormick@cistech.net