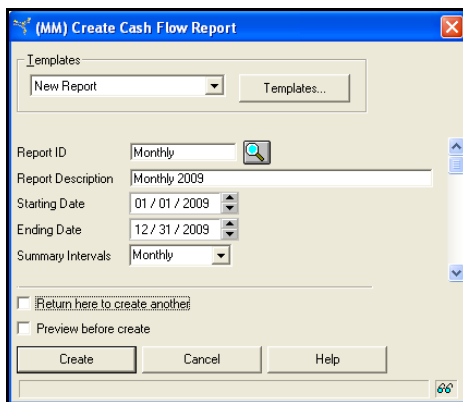
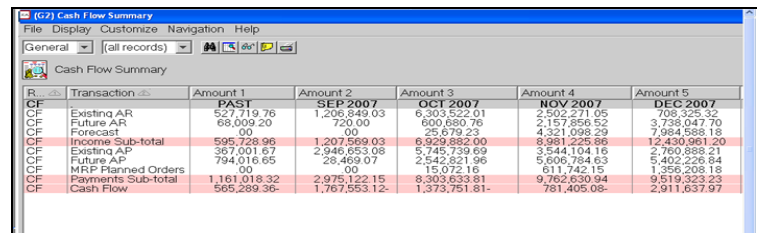


## Quickly project cash flow using existing MAPICS data.

**CISTECH's Cash Flow Projection** solution utilizes the extensive MAPICS database to project future cash flow requirements. Particularly valuable to seasonal manufacturers, this solution will help anyone interested in projecting and planning for future sources and uses of cash.

Cash Flow Projection brings together all elements of your business in an easy to use report and analysis tool that can be run on demand and provide real time visibility of cash requirements.

Transaction	Amount 1	Amount 2	Amount 3	Amount 4	Amount 5
Existing AR	527,719.76	1,206,849.03	6,303,522.01	2,502,271.05	708,325.32
Future AR	68,009.20	720.00	600,680.76	2,157,856.52	3,738,047.70
Forecast	00.00	00.00	25,679.23	4,321,098.29	7,984,588.18
Income Sub-total	595,728.96	1,207,569.03	6,929,882.00	8,981,225.86	12,430,961.20
Existing AP	357,001.67	2,946,653.08	5,745,739.69	3,544,104.16	2,760,889.21
Future AP	794,016.65	28,469.07	2,542,821.96	5,606,784.63	5,402,226.84
MRP Planned Orders	00.00	00.00	15,072.16	611,742.15	1,356,208.18
Payments Sub-total	1,161,018.32	2,975,122.15	8,303,633.81	9,762,630.94	9,519,323.23
Cash Flow	565,289.36-	1,767,553.12-	1,373,751.81-	781,405.08-	2,911,637.97

### Benefits of Cash Flow Reporting:

- Quickly project requirements or generation of cash
- Builds on existing MAPICS data, no 'implementation' required
- Easy to user Browser Interface
- Flexible report development options with extract to Excel for further analysis

### Features and Functions:

- AR-existing invoice due date, COM order scheduled ship date plus customer payment terms
- Accepts forecast by customer and item
- AP- existing invoice due date, due to stock date with payment terms.
- MRP planned orders use due date with primary vendor payment
- Create Excel output during reporting for further analysis

### Services to support your use of RNI:

- User manual, Implementation instructions
- CISTECH consulting services to assist you in planning, education, and implementing.

Pre-requisites: IFM or AM, IM, PUR, MRP. R6, R7, or R9. Integrator.